



FIRE FIGHTING SYSTEMS

FOAM TRAILER

APPLICATION

The Foam Trailer SIA-RFT-1000 is a portable wheeled trailer which is designed to provide mobile fire protection.

These units are very useful when there is a need to deploy additional firefighting appliances on a specific target or to cover an area where fixed firefighting systems are not installed or available.

They are typically used in areas such as refineries, tank farms, chemical plants, marine terminals and other industrial facilities

The Foam Trailer comes in a compact and economically priced package. They are designed and developed for extreme incident flexibility; they can be easily pulled by a vehicle to a fire hazard site; they can be quickly placed into action and provide foam discharge through a pre-piped monitor.



MAIN FEATURES

- Flexible design (can also be customizable)
- Solid construction and accurate finishing
- Red RAL 3000 standard epoxy coating
- Suitable for corrosive environments
- Low costs and minimal maintenance
- Great volume foam storage
- Single-axle carbon steel frame
- Mechanical stationary brakes
- Automatic reverse
- Rotating and adjustable front wheel
- Commercial rubber tires
- Four stabilizers vertically extensible
- Draw bar with towing ring Ø40mm
- Operator platform in galvanized carbon steel
- Hose bins on each side
- Foam Monitor feeding manifold 4", in carbon steel Sch. STD
- Four inlet connections 2½" c/w check ball valve, cap & chain
- Foam tank in stainless steel 316L
- Tank nominal capacity: 1000 L
- Drain, filling and inspection facilities
- Outlet connection (to Monitor Nozzle) 1½", with dip-tube
- Pre-packaged Foam Monitor Station (Monitor and Stream Nozzle)
- Net (empty tank) weight: 650 kg
- Gross (full tank) weight: 1650 kg
- Maximum speed: 40 km/h
- Standard operative flowrate: 4000 LPM
- Standard operative pressure range: 8 to 15 bar
- Optional lights, reflectors and signs for use on public road

DESCRIPTION

The Foam Trailer SIA-RFT-1000 is essentially a lightweight but rugged assembly, composed by a frame, single axle, wheels and tires designed to carry the gross weight of the trailer with associated equipment and foam concentrate.

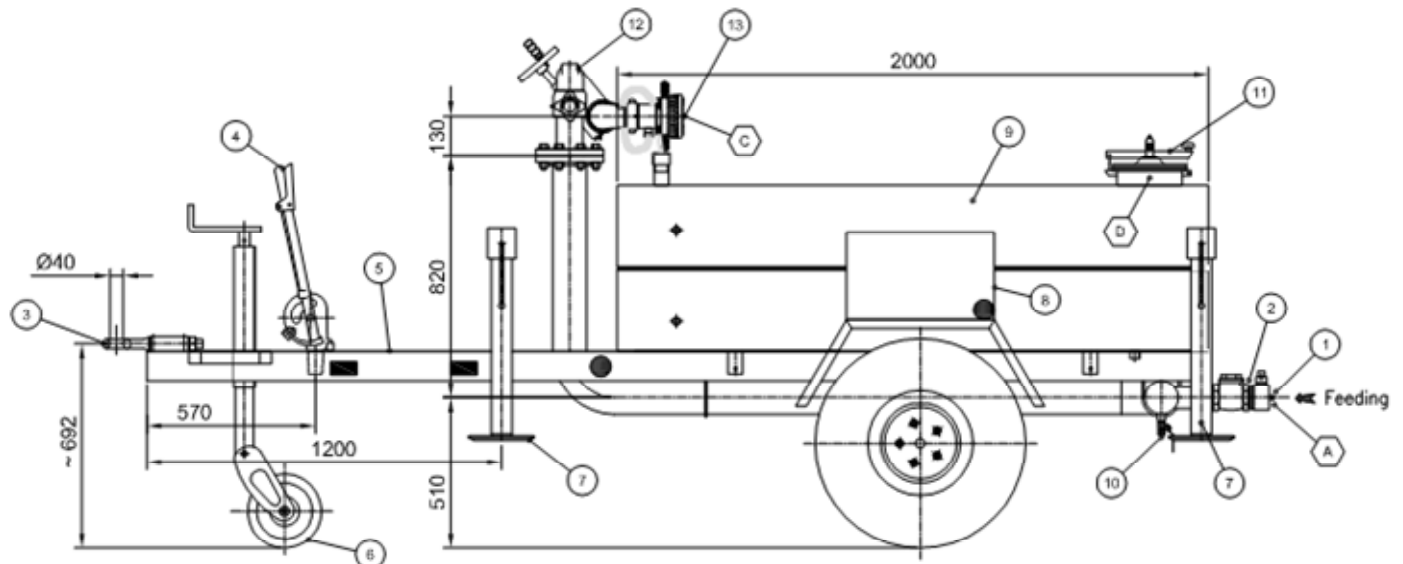
The trailer frame includes four swing down stabilization jacks, standing area with a non-slip surface, deck in embossed aluminium sheet; the moving and manoeuvre mechanisms include mechanical stationary breaks, automatic reverse and rotating front wheel. It can be equipped with lights, reflectors and signs for use on public road; it can also be customized with special signs and markings on request.

The foam storage tank has a 1000 L (265 gal) capacity and it is properly fixed on the rear of the trailer. It is constructed of stainless steel 316L and provided with proper drain (1" valve), filling (commercial manhole) and inspection facilities (two visual level gauges). An outlet connection on the top of the tank, complete with dip-tube can be connected by means of an industrial grade discharge hose, to provide foam concentrate to the monitor nozzle during discharge.

The Foam Trailer is designed to be equipped with a completely packaged fixed Foam Monitor Station. The standard package is composed of: a cast brass monitor, with a full 3" waterway for flow rates up to 4000 LPM, that guarantees a full 360° rotation and a vertical travel of 140° (+85° / -55°); a 2½" single flow and self-educting nozzle, with great stream quality and reach. It is made of cast brass and it is designed for use with Class A and B fam, including both AFFF and FP. It can provide 0.5%, 1%, 3% and 6% foam proportioning. The Foam Monitor Station is connected and fed by a 4" carbon steel SCH. STD manifold, with corrosion resistance coating and equipped with four inlet connections 2½" BS336 M, each fitted with check ball valve, cap and chain.

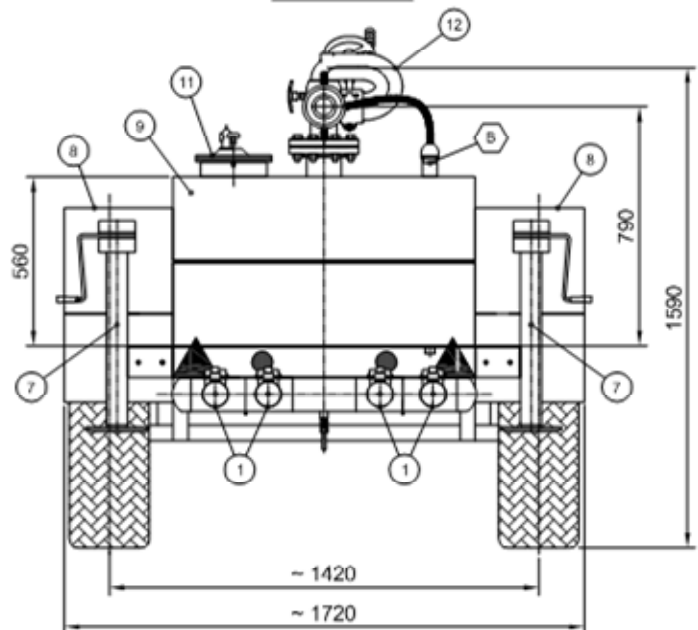
In the two side bins, four fire hoses can be provided, with a standard length of 30m, a nominal bore of 2½" and fitted with BS336 brass connections.

DIMENSIONS & COMPONENTS DETAILS

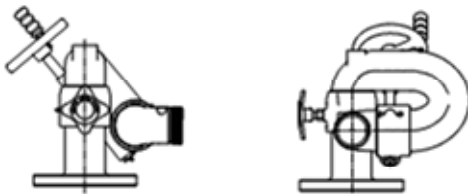


FRONT VIEW

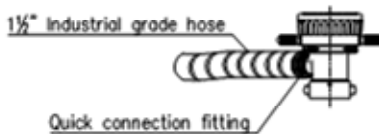
BACK VIEW



STANDARD MONITOR DETAIL



STANDARD NOZZLE DETAIL



LEGEND

1. INLET CONNECTION
2. CHECK VALVE
3. TOWING EYE
4. BRAKE HANDLE
5. PLATFORM
6. FRONT WHEEL
7. EXTENSIBLE STABILIZER
8. HOSE BIN
9. FOAM TANK (1000 L)
10. DRAIN VALVE
11. MANHOLE (FOR FILLING)
12. FOAM MONITOR
13. FOAM NOZZLE

CONNECTIONS

- A. WATER INLET (2 1/2" BS336)
- B. FOAM CONCENTRATE OUTLET (1 1/2")
- C. FOAM SOLUTION NOZZLE (2 1/2")
- D. FOAM FILLING (Ø 220 mm MANHOLE)

OPTIONALS

- SPECIAL CUSTOM COATING
- TRAILER APPROVED FOR USE ON PUBLIC ROAD
- SPECIAL LIGHTS, REFLECTORS AND SIGNS
- CUSTOM LABELS
- SPECIAL CONNECTIONS (STORZ, BSS, ETC.)
- LEAF SPRING OR RUBBER TORSION BAR SUSPENSIONS

TECHNICAL FEATURES

FRAME MATERIAL:	CARBON STEEL
TANK MATERIAL:	SS 316L
TANK CAPACITY:	1000 L
MONITOR MATERIAL:	CAST BRASS
NOZZLE MATERIAL:	CAST BRASS
MAX FLOWRATE:	4000 LPM (inlet)
STANDARD FLOWRATE:	1900 LPM (at nozzle)
MIN/MAX PRESSURE:	8/15 bar
DESIGN TEMPERATURE:	+5 / +60 °C
FOAM CONCENTRATE:	AFFF/FP
FOAM PROPORTIONING:	0.5% / 1% / 3% / 6%
NET WEIGHT:	650 kg
GROSS WEIGHT:	1650 kg